

THIS DOCUMENT IS PROVIDED BY NEW LEAF ENERGY, INC. TO FACILITATE THE SALE OF THE RENEWABLE ENERGY PROJECT REPRESENTED HEREIN. REPRODUCTION, RELEASE OR UTILIZATION FOR ANY OTHER PURPOSE, WITHOUT PRIOR WRITTEN CONSENT IS STRICTLY PROHIBITED.



55 TECHNOLOGY DRIVE, SUITE 102
LOWELL, MA 01851
PHONE: (800) 818-5249
FAX: (888) 678-8991
WWW.NEWEAFENERGY.COM

NOT FOR CONSTRUCTION



9575 W. Higgins Road
Rosemont, Illinois 60018
(847) 823-0500

IT IS A VIOLATION OF LAW FOR ANY PERSON TO ALTER ANY DOCUMENT WHICH BEARS THE SEAL OF A PROFESSIONAL ENGINEER, UNLESS THEY ARE ACTING UNDER THE DIRECTION OF A LICENSED PROFESSIONAL ENGINEER.

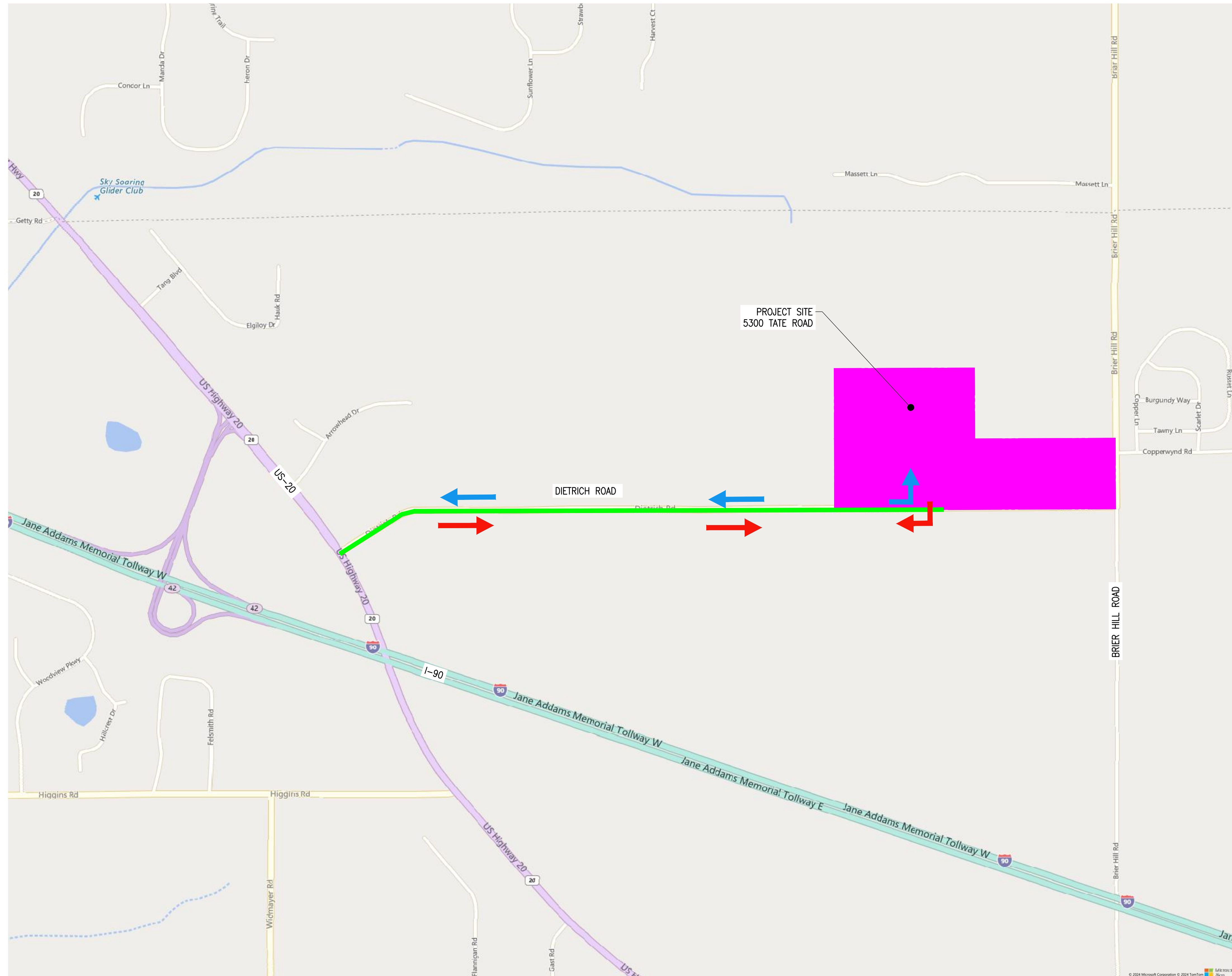
SITE USE PERMIT DESIGN PACKAGE
0 DIETRICH RD
HAMPSHIRE IL, 60124

PROJECT NUMBER:
120-1303

REV	DATE	DRAWN	CHECKED	RELEASE LEVEL

SCALES STATED ON DRAWINGS ARE VALID ONLY WHEN PLOTTED ARCH D 24" X 36"

DIETRICH ROAD SOLAR TRAFFIC ROUTE EXHIBIT



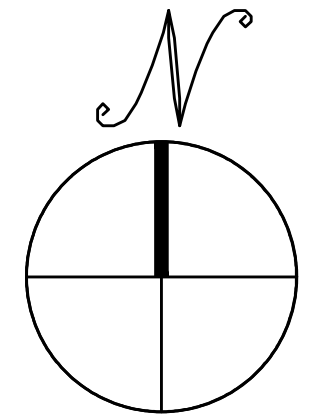
TRAFFIC ROUTE DESCRIPTION

APPROACHING PROJECT SITE: ALL TRAFFIC SHALL EXIT OFF OF US-20 ON TO DIETRICH ROAD HEADING EAST. CONTINUE TO THE PROJECT SITE ON THE LEFT.

EXITING PROJECT SITE: ALL TRAFFIC SHALL TURN RIGHT OUT OF THE PROJECT SITE ON TO DIETRICH ROAD HEADING WEST. CONTINUE TO ENTER ON TO US-20.

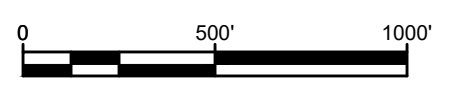
LEGEND

- DESIGNATED HIGHWAYS
- TRAFFIC FLOW TO SITE
- TRAFFIC FLOW FROM SITE



DIETRICH ROAD SOLAR TRAFFIC ROUTE EXHIBIT

SCALE: 1" = 500'



C:\Users\challone_m\OneDrive\Box\Salesforce\Opportunities\0 Dietrich RD-Komel\CAD_0 Dietrich RD-Traffic Route Exhibit.dwg